

**Trivia of the week:** What is the actual size of a 2 x 4?

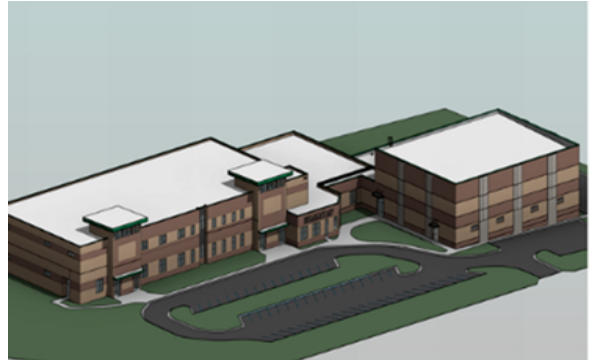
**A.** 2" x 4" **B.** 1 1/2" x 3 1/2" **C.** 2 1/2" x 4 1/2" **D.** 1" x 3" (See answer on last page)

## Project: Hank Aaron Academy Additions & Modifications

**Week Ending: January 3, 2025**

### THIS WEEK:

- Completed Phase 1: Parking area
- Finished 90% of cafeteria demo
- GA Power began boring for new transformer
- Moved temporary fence for Phase 2 as per logistics plan



*Striping in Phase 1 parking area completed.*



*Handicap signage being installed in Phase 1 parking area.*



*Demolishing flooring in cafeteria area.*



*Georgia Power boring new primary service.*

### **NEXT WEEK** – January 6th -January 10th

- Complete cafeteria demo
- Start Phase 2 demo of parking lot

**Answer: B-** *2x4's, 2x6's, and 2x8's are all actually 1/2" smaller than their given measurements.  
2x10's, and 2x12's are 3/4" smaller than their given measurements*

### **SCHEDULED DATE OF SUBSTANTIAL COMPLETION**

- December 1, 2025

### **PREPARED BY:**

Karee Shaw, Carroll Daniel Construction Co.

